

CyberLink DVD Suite

User's Guide

The CyberLink logo features the brand name in a bold, italicized sans-serif font. A red swoosh underline is positioned beneath the letters 'Link', starting from the bottom of the 'L' and curving under the 'k'.

Copyright and Disclaimer

All rights reserved. No part of this publication may be reproduced, stored in a retrieval system, or transmitted in any form or by any means electronic, mechanical, photocopying, recording, or otherwise without the prior written permission of CyberLink Corporation.

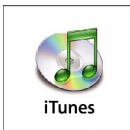
To the extent allowed by law, CyberLink DVD Suite IS PROVIDED "AS IS", WITHOUT WARRANTY OF ANY KIND, EITHER EXPRESS OR IMPLIED, INCLUDING WITHOUT LIMITATION ANY WARRANTY FOR INFORMATION, SERVICES, OR PRODUCTS PROVIDED THROUGH OR IN CONNECTION WITH CyberLink DVD Suite AND ANY IMPLIED WARRANTIES OF MERCHANTABILITY, FITNESS FOR A PARTICULAR PURPOSE, EXPECTATION OF PRIVACY, OR NON-INFRINGEMENT.

BY USING THIS SOFTWARE, YOU AGREE THAT CYBERLINK WILL NOT BE LIABLE FOR ANY DIRECT, INDIRECT, OR CONSEQUENTIAL LOSS ARISING FROM THE USE OF THIS SOFTWARE OR MATERIALS CONTAINED EITHER IN THIS PACKAGE.

The terms and conditions here under shall be governed and construed in accordance with the laws of Taiwan.

CyberLink DVD Suite is a registered trademark along with other company and product names mentioned in this publication, used for identification purposes and remain the exclusive property of their respective owners.

iTunes and QuickTime software and logos are licensed with Apple Computer, Inc., and CyberLink shall not be responsible for end user support for said software.



Contact Us



Version 2 Limited

Unit 307 3/F, West Wing, No. 8 Science Park West Avenue
Hong Kong Science Park, Pak Shek Kok, Shatin, N.T.
Hong Kong

Office hours

Mon-Fri: 9:30am-1:00pm 2:00pm-6:30pm

Sat: 9:30am-1:00pm (Except public holiday)

Contact Us:

Sales Hotline: (852) 2893 8860

Support Hotline: (852) 2893 8186

Fax: (852) 2893 8214

Version 2 Limited (Customer Service Center)

18/F, Go-up Commercial Building, 998 Canton Road,
Mong Kok, Hong Kong

Office hours

Mon-Fri: 9:30am-1:00pm 2:00pm-6:30pm

Sat: 9:30am-1:00pm (Except public holiday)

Contact Us:

Sales Hotline: (852) 2893 8860

Support Hotline: (852) 2893 8186

Fax: (852) 2148-0323

Contents

Introduction.....	1
CyberLink DVD Suite Functions	2
The PowerStarter Program	2
Menu Icons	3
Function/Program Icons	5
Quick Access Buttons	5
Version Table	8
System Requirements	9
Music	11
Making Music Discs	12
Burning a Music Disc	12
Ripping Audio	14
Data.....	15
Burn a Data Disc	16
Burn a Bootable Data Disc from a Floppy Disc	17
Format a Disc	19
Formatting a Disc	19
Using InstantBurn	20
Movie Player	21
Watching Movies	22
Playback Controls	22

Main Controls23
Navigation Features During Playback23
Playing DVDs and other Media24
Drag & Drop for Playback24
Playing DVD Files from Hard Disk Drive24
Configuration24

Video & Photo 27

Create a Movie Disc28
 Select a Disc Format28
 Capture/Import Media28
 Customize Your Disc’s Menu Page29
 Final Output32
Edit Your Videos33
 Editing Options Available33
 Using Magic Tools34
 Adding Effects35
 Producing your Movie36
Editing Your Photos37
Creating a Slideshow38
Burning a DVD Folder39

Copy & Backup 41

Copying Data Discs42
Copying a Movie DVD43
Backing up and Restoring Data44
 Backing Up Data44
 Restoring Data46

Utilities 49

Creating a Disc Image50

Burning a Disc Image51

Erasing a Disc52

Creating Labels53

 Step 1 - Select a Label Type53

 Step 2 - Edit Disc Information54

 Step 3 - Edit Layout54

 Step 4 - Print54

Technical Support..... 55

Before Contacting Technical Support56

 Web Support57

 Telephone Support57

 Email Support58

Index 59

Chapter 1:

Introduction

Welcome to CyberLink DVD Suite, the multimedia suite that opens up the world of digital entertainment on the PC. CyberLink DVD Suite has a number of CyberLink products that provide you with the complete DVD viewing and authoring experience.

CyberLink DVD Suite allows you to:

- Watch movies in style with the world's #1 DVD player
- Burn music, movie or data DVDs and CDs
- Rip audio CDs
- Author DVD movies and slideshows with motion menus
- Edit videos and photos with magical editing tools
- Back up and restore your data
- Create and print disc labels
- Access useful disc tools (erase discs, create and burn disc images)
- Drag and drop data onto a disc like with a floppy or other removable disks

CyberLink DVD Suite Functions

All of CyberLink DVD Suite's functions can be accessed from the CyberLink PowerStarter program. CyberLink PowerStarter provides easy access to a variety of CyberLink's home entertainment software for whatever task you have at hand, from managing your media files and creating movies to organizing your disc content, burning discs and more.

The PowerStarter Program

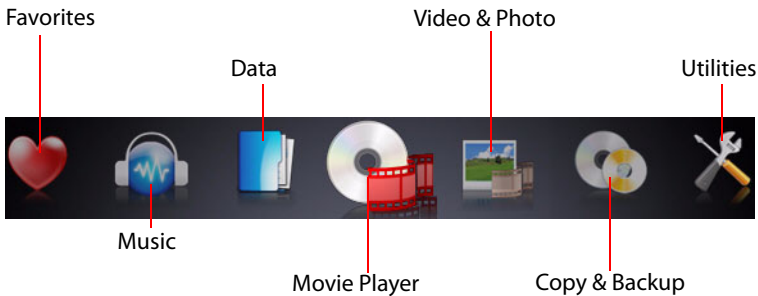
CyberLink PowerStarter appears as follows:



The CyberLink PowerStarter program offers a more complete interface, allowing you to work with media using a task-based approach, launch CyberLink programs and upgrade CyberLink DVD Suite.

Menu Icons

Click the menu icon that corresponds to the type of media or feature you want to explore.



This section describes the different functions that can be accessed through CyberLink PowerStarter.

Favorites



The Favorites menu allows you to add the functions and programs you use most often, so you can access them all from one convenient location. By default, this window contains no icons.

To add a function or program to the Favorites menu, click the appropriate menu icon to display the function or program. Right-click on the desired icon, then select **Add to Favorites**.

If you have added a function/ program to the Favorites menu, you can remove it by right-clicking on the icon, then selecting **Remove from Favorites**.

Music



The Music menu contains functions for burning audio files to a disc or in a variety of popular formats. You can also rip an audio disc to your hard drive.

Data



The Data menu contains functions for burning data files to disc. You can also create a bootable disc and format discs with CyberLink InstantBurn to support drag-and-drop burning on rewritable discs.

Movie Player



The Movie Player menu contains functions for watching movies using feature-rich navigation controls for an interactive and tailored viewing experience.

Video & Photo



The Video & Photo menu contains functions for:

- burning video/photo content to disc
- editing video/photo source files
- creating slideshows with background music
- organizing and burning all of your media files to disc

Copy & Backup





The Copy & Backup menu contains functions for copying discs and DVD movies. You may also back up all of your important data and then restore it when and if required.

Utilities



The Utilities menu contains functions for managing your discs, such as erasing current disc content, designing and printing disc labels, and create or burn disc images.

Note: If the number of items in a particular function exceeds the space provided by CyberLink PowerStarter, use the   buttons to scroll right or left as required.

Function/Program Icons

Click one of the menu icons to reveal the function or program icons it contains. Click an icon to perform that function (or open the corresponding program).

Alternately, you can right-click a function or program icon, then select **Execute**.

Quick Access Buttons

The three quick access buttons in the lower right-hand corner of the program open the **Configuration**, **Upgrade** and **CyberLink Products** windows. These windows are explained in the following sections.

Configuration




CyberLink Products


Upgrade

Configuration Window

To configure the behavior of CyberLink PowerStarter, click the **Configuration** button, then select your desired settings.


- **Return to PowerStarter after you close a program:** Returns to the CyberLink PowerStarter program after you close a program that you have accessed through the interface.
- **Auto-check for latest version:** Automatically checks for newer versions of the installed software programs every 14 days. (Newer versions are indicated by a red icon  in the Upgrade window.)
- **Receive CyberLink product information:** Allows you to enable/disable banner and running text on the upgrade page.

Upgrade Window

To view product version information for the CyberLink programs currently installed on your computer, click .



The CyberLink programs installed on your computer are listed in a table, along with the current version number and an icon indicating whether or not there is an upgrade or a patch available.


Display the Latest Software Versions

PowerStarter automatically checks for updates every 14 days. However, you can manually update this information by clicking .


PowerStarter checks your computer and displays the latest version numbers of all of the available CyberLink software programs.

Check for Software Upgrades

If any patches or upgrades are available the corresponding buttons next to the product become enabled. Click on the  icon to open a page that lets you download the latest software patch for the corresponding product. You may also click the  icon next to a product name to open a page that allows you to upgrade that specific product.

To view a list of all the current updates available, click  to access the CyberLink Upgrade Center Web site.

CyberLink Products Window

To view a complete list of the CyberLink programs, click . You can then click an icon to open the corresponding program.

Note: The specific programs contained in CyberLink PowerStarter depend on the version you have purchased. For more information, see the "Version Table" on page 8.

Version Table

The following table shows the differences between all the available versions of Cyberlink DVD Suite 6.0.

Product	CDS 6.0 Essential	CDS 6.0 Pro
PowerDVD	7.0 Express 2ch	7.0 6ch
PowerDirector	-	6.5 DE
PowerProducer	4.2 DVD without Dolby	4.2 DVD w/Dolby 6ch
Medi@Show	3.0 full version	3.0 full version
Power2Go	6.0 Lite	6.0 DVD with Dolby
PowerBackup	2.5 Light	2.5 full version
Instant Burn	5.0 full version	5.0 full version
PowerDVD Copy	1.0 full version	1.0 full version
LabelPrint	2.0 full version	2.0 full version
BD/HD Advisor	2.0	2.0
PowerStarter	6.0	6.0
iTunes	7	7

Note: Some functions or programs may not be available in the version of CyberLink DVD Suite that you are running. For information on the features contained in specific programs, see that program's readme or help file.

System Requirements

The system requirements listed below are recommended as minimums for working with the program. You may find that your system, while meeting these recommended minimums, requires expanded capacity for specific tasks.

Minimum System Requirements	
OS	<ul style="list-style-type: none"> • Microsoft Windows Vista / XP / 2000
Screen Resolution	<ul style="list-style-type: none"> • 1024 x 768, 16bit color or above
Memory	<ul style="list-style-type: none"> • 512 MB (1 GB or above recommended)
CPU	<ul style="list-style-type: none"> • Intel Pentium 4 1.3 GHz or AMD Athlon 1500+ and above (Intel Pentium 4 3.0 GHz or AMD Athlon XP 3000+ recommended)
HDD Space	<ul style="list-style-type: none"> • 1 GB for making VCDs • 5 GB for making DVDs
DV	<ul style="list-style-type: none"> • OHCI IEEE 1394 compliant device
Video Capturing Device	<ul style="list-style-type: none"> • Analog video capture: USB or PCI capture devices compliant to WDM standards • DV Camcorder video capture: IEEE 1394 I/O devices compliant with OHCI standards • Digital Still Camera photo import: USB interface
Burning	<ul style="list-style-type: none"> • A burning device is required for burning CDs, VCDs and DVDs. See our web site (http://www.cyberlink.com) for additional information on burning device requirements.

Chapter 2:

Music

The Music function lets you burn audio files to a CD or DVD with CyberLink Power2Go. You can also rip music from an audio CD onto your hard drive. Depending on the audio file format you burn to, you may require a special player or player software to be able to listen to your disc.



Note: To ensure that your computer has the required CODECs for burning and ripping music files, please make sure that Windows Media Player 11 is installed on your computer.

Making Music Discs

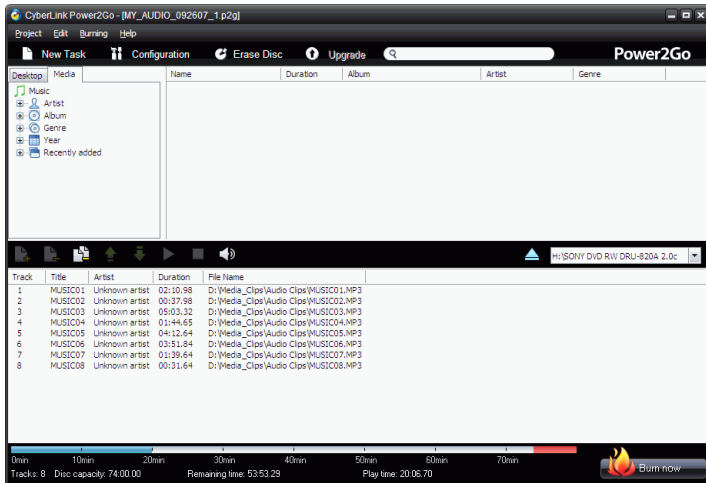
CyberLink Power2Go makes it easy to create discs to playback your music. You can create a regular audio CD for playback on traditional CD players or create a CD or DVD that contains MP3 or WMA files. The steps are the same for creating these discs, but the outputted discs are different.

Note: For a more detailed description of this program and its functions, please consult the product's help file.

Burning a Music Disc

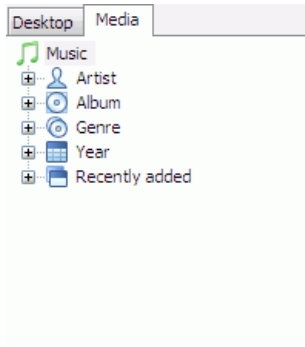
To burn a music disc, do this:

1. Select the disc type you want to make from the CyberLink PowerStarter program window. The Music Disc window will be displayed.



2. Use the search pane to navigate to the files you want to include on your disc. The **Media** tab allows you to conveniently perform an

advanced search for your music files by album, artist, genre, recently added or year using the CyberLink Media Library service.



3. Select the audio files you want to burn and then drag them to the destination disc or click the add buttons.

Note: To extract the audio from a video clip to your audio CD, simply add the video clip to the disc.

4. When you have added all of the audio that you want to burn, click



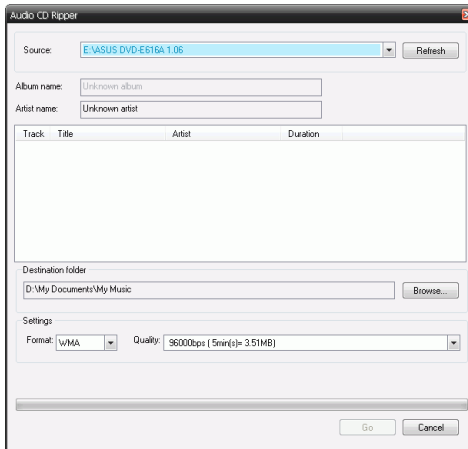
5. If required, adjust the configurations on the Music (**Audio CD, MP3 Quality, WMA Quality**) or **Burner** tabs.
6. Click **Burn** when you are ready to burn your disc. CyberLink Power2Go will proceed to burn your disc.
7. When burning is complete, select an option in the dialog box that opens:
 - Click **View Log** to view the burning log. The log opens in your default TXT editor, where you can view and save it.
 - Click **Print Label** to print a disc label and open the CyberLink LabelPrint program. See "Creating Labels" on page 53.
 - Click **OK** to close the dialog and then exit.

Ripping Audio

The Rip Audio function copies audio tracks from an audio CD to your hard drive in MP3, WAV or WMA format.

To rip audio files to your hard drive, do this:

1. Click on **Rip an audio CD** in the CyberLink PowerStarter program window.



2. Insert your disc and select your drive.
 - If you change discs or select a different drive, click **Refresh** to ensure that the most updated information is displayed.
3. Select the audio track(s) you want to rip to your hard drive.

Note: In your version of CyberLink Power2Go, this feature may be limited or unavailable.

4. Locate the folder you want to rip the audio tracks to.

Note: You can select a different audio format or quality, if desired.

5. Click **Go** to begin ripping files. CyberLink Power2Go will rip the files to the specified folder.

Chapter 3:

Data

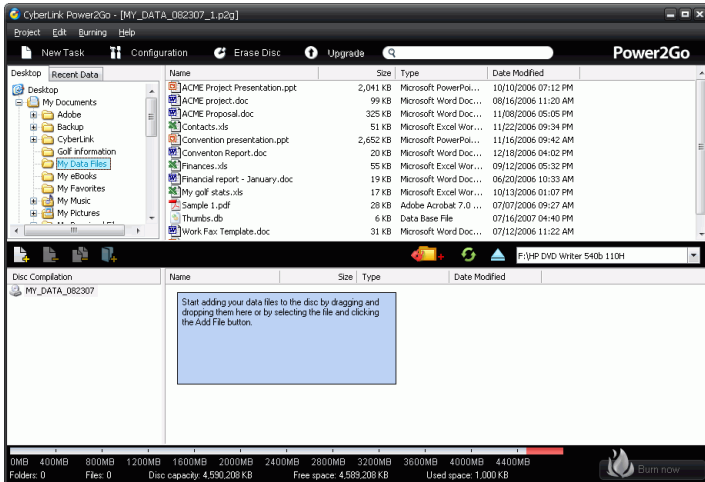
CyberLink DVD Suite offers a number of burning functions, including making data discs with CyberLink Power2Go. You can burn to CD or DVD and also create a bootable CD or DVD. You can also format a disc for use with CyberLink InstantBurn.




Burn a Data Disc

To burn a data disc, do this:

1. Select the data disc type you want to make from the CyberLink PowerStarter program window. The Data Disc window opens.



2. Use the search pane to navigate to the files you want to include on your disc. The **Recent Data** tab allows you to conveniently perform an advanced search for your data files by recently added or opened, using the CyberLink Media Library service.
3. Select the files or folders you want to burn and then drag them to the destination disc or click the add buttons.
4. When you have added all of the content that you want to burn, click .
5. If required, adjust the configurations on the **Data** or **Burner** tabs.
6. Click **Burn** when you are ready to burn your disc. CyberLink Power2Go will proceed to burn your disc.
7. When burning is complete, select an option in the dialog box that opens:


- Click **View Log** to view the burning log. The log opens in your default TXT editor, where you can view and save it.
- Click **Print Label** to print a disc label and open the CyberLink LabelPrint program. See "Creating Labels" on page 53.
- Click **OK** to close the dialog and then exit.

Burn a Bootable Data Disc from a Floppy Disc

To burn a bootable data disc, do this:

1. Select the data disc type you want to make from the CyberLink Power2Go program window.
2. Click the **Configuration** button. The Configuration/Information window opens to the **Data** tab.
3. Select the **Make this disc bootable** option.
4. Then either:
 - select the **Use a bootable image file** option, click **Browse...** and then locate the bootable disc partition.
 - select the **Use a bootable floppy disc** option.

Note: If you select the **Use a bootable floppy disc** option, you will be prompted to insert the floppy disc into your floppy disc drive after you click **Burn**.

5. Click the **OK** button to return to the Data Disc window. If required, add other files or folders to your bootable data disc, however it is not necessary.
6. When you have added all of the content that you want to burn, click . The button features a flame icon and the text "Burn now".
7. If required, adjust the configurations on the **Data** or **Burner** tabs.
8. Click **Burn** when you are ready to burn your disc. CyberLink Power2Go will proceed to burn your disc.

9. When burning is complete, select an option in the dialog box that opens:
 - Click **View Log** to view the burning log. The log opens in your default TXT editor, where you can view and save it.
 - Click **Print Label** to print a disc label and open the CyberLink LabelPrint program. See "Creating Labels" on page 53
 - Click **OK** to close the dialog and then exit.

Format a Disc

CyberLink InstantBurn allows you to write data by folder or file onto a CD or DVD by simply dragging and dropping the data onto the disc like with a floppy or other removable disks. You can write onto the disc until it is full, or drag and drop unwanted files and folders to the Recycle Bin to remove them from the disc.

Before you can begin dragging and dropping your data onto a CD or DVD, you must first format the disc. CyberLink InstantBurn is packet-writing software, so it formats discs in UDF (Universal Disc Format) format.

Note: Once you have formatted a disc using InstantBurn, you cannot use it for burning using CyberLink Power2Go or other burning software.

Formatting a Disc

To format a disc that can be used with CyberLink InstantBurn, do this:

1. Insert a blank unformatted disc into the drive.
2. Click on **Format a disc** in the CyberLink PowerStarter window. The InstantBurn window will be displayed.
3. Select the drive where the disc to be formatted was inserted, then click **Next**.
4. Click Properties to check the disc properties. If everything is OK, click **Next**.
5. Input the volume label, then click **Finish**. You can change the volume label after the disc has been formatted.

Note: The volume label is a maximum of 11 characters. You cannot use spaces in the label. When formatting a DVD, you can also select the UDF version. Version 1.50 is most commonly used, so there is usually no need to change this setting.

6. Click **OK** on the confirmation prompt that appears to start formatting.

Using InstantBurn

Before you begin, check that the **InstantBurn** icon is in the system tray in the bottom right of the screen.



- Indicates that CyberLink InstantBurn is running, but either no disc is currently in the drive or the current disc needs to be formatted.



- Indicates that CyberLink InstantBurn is running and is ready to be used.

Note: For a more detailed description of this program and its functions, please consult the product's help file.

Writing to Disc

Note: The amount of data that can be written to a formatted RW disc is less than the disc's physical capacity. For example, you can write about 530 MB of data onto a 650 MB CD-RW, and 4.3 GB of data onto a 4.7 GB DVD-RW/+RW (and slightly less on a DVD-RAM).

1. Open **My Computer** to display the disc drive icon to which you want to copy data.
2. Open a separate window to display the files/folders you want to copy. Make sure it does not hide the window you opened in Step 1.
3. Click on the files/folders in the window then drag them onto the disc drive icon. The files/folders are copied onto the disc. (The copy window does not appear if a relatively small amount of data is being copied.)
4. Once copying is finished, double click on the disc drive icon to open it and check that the files were copied properly.

Supported discs

Instant Burn 5.0 supports rewritable media and certain write-once media. You can only use CD-RW, DVD-RW, DVD+RW, and DVD-RAM discs.

Chapter 4:

Movie Player

CyberLink DVD Suite provides access to CyberLink PowerDVD, a software DVD player with the features and controls of a normal living-room DVD player. It offers feature-rich navigation controls for an interactive and tailored viewing experience.



Note: For a more detailed description of this program and its functions, please consult the product's help file.

Watching Movies


To begin watching a movie, insert a DVD into your drive or click on **Watch a DVD movie** in the CyberLink PowerStarter window.

CyberLink PowerDVD's advanced video and audio technologies deliver the highest quality viewing and listening experience possible on the PC.

Playback Controls

When you first open CyberLink PowerDVD, the program appears as follows:



The A/V Options pad (click  to open), which allows you to select an audio output mode, an equalizer preset, and a video enhancement, appears as follows:









The Menu/Number pad (click  to open) appears as follows:







Main Controls

CyberLink PowerDVD offers feature-rich navigation controls for an interactive and tailored viewing experience, including:

-  Capturing Your Favorite Scenes
-  Watching movies in full screen
-  Switching Audio Streams
-  Displaying Subtitles
-  Configuring CyberLink PowerDVD
-  Returning to DVD menu

Navigation Features During Playback

If you would like to skip over certain chapters or return to more exciting scenes, CyberLink PowerDVD provides quick methods of navigation.

- Jump Functions - **Next**  and **Previous** .
- Shuttling Forward and Reverse - available speeds: 0.5x, 0.75x, 1x, 1.5x, 2x, 3x, 4x, 8x, 16x, 32x.
- Step Frame Functions - **Forward**  or **Backward** .
- Time Search

- Bookmark Your Favorite Scenes

Playing DVDs and other Media

Not only does CyberLink PowerDVD playback DVDs, but it also plays back a variety of media in a variety of formats, including:

- DVD VR Discs
- VCDs/SVCDs
- Audio CDs
- DVD Folders and video files

Drag & Drop for Playback

The simplest way to playback a file is to drag & drop it directly onto the CyberLink PowerDVD user interface and it will play right away! This includes all media file types that are supported by CyberLink PowerDVD and playlist formats (.m3u and .pls).

Playing DVD Files from Hard Disk Drive

CyberLink PowerDVD supports playing your own personal DVD folders on your hard disk drive so you can preview it before burning it onto a DVD-writable disc. All you need to do is specify the video source and select the folder that contains your video.

Configuration



CyberLink PowerDVD can be configured for playback that suit your specific needs.

Player Configuration

On the Player Configuration tab you can:

- Set your default CD/DVD-ROM Drive.
- Set CyberLink PowerDVD to automatically play discs whenever they are inserted.
- Set CyberLink PowerDVD to run automatically at Windows startup.
- Have CyberLink PowerDVD show tool tips whenever your cursor is positioned over a specific function or feature.
- Enable DVD+VR playback.
- Auto check for software updates.
- Enable the DVD Auto-Resume function.
- To access more player settings, click **Advanced**. For a detailed description of the Advanced settings, please consult the product's help file.

User Interface Configuration

This configuration gives you creative control over your CyberLink PowerDVD appearance, including letting you select the UI skin and display language.

Video Configuration

You can configure your video playback options with the following features:

- **Enable hardware acceleration** to activate IDCT and Motion Compensation. By enabling this option, some features will be unavailable.
- **Run full screen** if you would like the playback default to use your monitor's maximum screen area.
- **Video always on top** keeps the CyberLink PowerDVD Video on top of all other applications.
- **CLEV-2 (CyberLink Eagle Vision 2)** is a video enhancement technology developed by CyberLink that detects video content

and dynamically adjusts the brightness/contrast/saturation ratios so that you do not need to change the color settings if the movie you are watching contains scenes that are overly dark or too bright.

- Select a **Use color profile**.
- Check **Automatically enable Read-It-Clearly in full screen mode** if you want PowerDVD to activate Read-It-Clearly when you are watching movies in full screen.
- To access more video settings, click **Advanced**. For a detailed description of the Advanced settings, please consult the product's help file.

Audio Configuration

You can configure your audio playback options with the following features:

- Select your **Speaker Environment** by clicking the drop-down menu and making your selection.
- Select your **Output Mode** by clicking the drop-down menu and making your selection.
- To access more audio settings, click **Advanced**. For a detailed description of the Advanced settings, please consult the product's help file.

Information Configuration

This configuration is for users who are searching for pertinent information regarding all aspects of their DVD entertainment.

Chapter 5:

Video & Photo

The Video & Photo functions in CyberLink DVD Suite let you perform a variety of tasks, including the capture of video content from a variety of sources and the production of DVDs and VCDs with CyberLink PowerProducer. You can also perform light editing tasks on your video with CyberLink PowerDirector Express, edit your photos with CyberLink PhotoNow! or create a dazzling slideshow with CyberLink Medi@Show.



Create a Movie Disc

CyberLink PowerProducer allows you to finalize your digital video productions and burn them to disc, providing easy access to all the features you require to make a professional looking disc.

Note: For a more detail description of any of the following steps, please consult the product's help file.

Select a Disc Format

The first step in producing a movie disc is selecting the format of the disc you want to create. Factors that influence the disc format you should use include the type of disc burner you have on your system, the length and quality of the video you use and the type of player you intend for playback.

You may select from the following available formats in the CyberLink PowerStarter window:

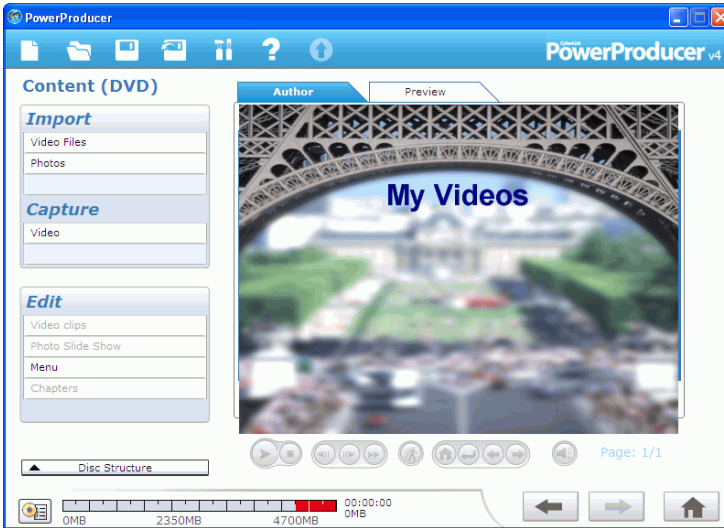
- **DVD:** to create a longer, high-quality video. (Requires DVD burner.)
- **VCD:** to create a lower-quality video or a slide show.
- **SVCD:** to create a medium-quality video that can contains menus like a DVD.

Selecting the disc type in the CyberLink PowerStarter window will automatically bring you to the Content window so you can begin capturing and importing your content.

Capture/Import Media

In order to assemble a video production you must first acquire your video content. You may already have digital files you simply want to import into CyberLink PowerProducer or you may have raw footage from either an analog or a digital source that you need to capture.

The import and capture functions are located in the Content window.



You may:

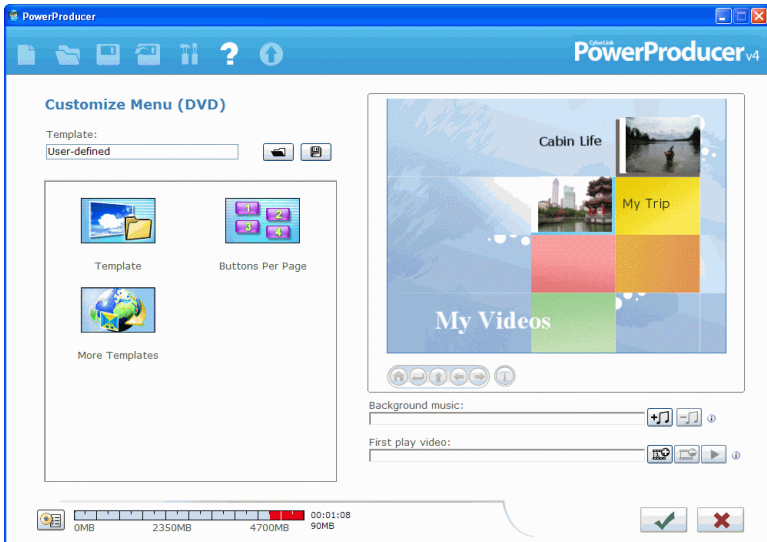
- Import Video Files
- Import Photos
- Capture from a DV Camcorder
- Capture from a TV
- Capture from a VCR
- Capture from a PC Camera
- Capture from a Digital Camera

Once you have imported your content you may perform light editing to your video using CyberLink PowerDirector Express. See "Edit Your Videos" on page 33 for more information.

Customize Your Disc's Menu Page

Menus allow you to navigate around on your final disc. The Customize Menu window gives you complete creative control over the look of your menu page. You can modify the appearance of the menu's buttons, text and overall layout.

To open the Customize Menu window, click **Menu** under the Edit heading on the Content window.



You can perform the following functions:

Set Up Your Menu Page

You can customize the layout of your menu page by selecting a menu template, background images, button layout and style and frames.

Modify Menu Text

You can customize the text that appears on the menu page, including customizing the font properties of text that appears on the menu page.

Set Background Music

You can set the background music for your menu page, which will be played every time this page is displayed.

Set a First Play Video Clip

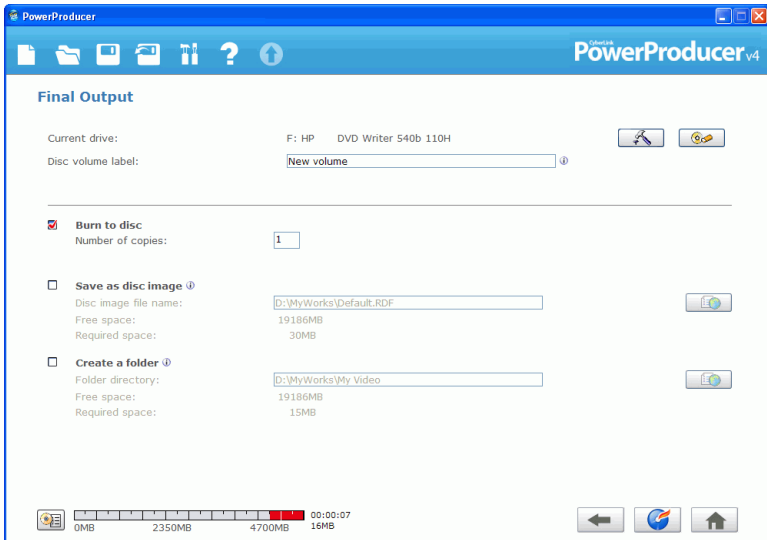
A clip designated as first play is the initial sequence that plays as soon as a disc is inserted into a computer for play, and before the menu page appears. No navigation buttons are available during the first play, and viewers cannot fast forward past this segment. In a professional production, first play typically consists of a copyright notice or warning. However, you may prefer to use a personal introduction or other video clip instead.

Set Chapters

Chapters allow for ease of navigation on a disc. If you set chapters on your disc, viewers can jump from the menu page to the start of these chapters in order to skip previous content. However, you may choose not to include chapters. If you do not set chapters, your movie plays automatically when the disc is inserted into a player. CyberLink PowerProducer can set chapters automatically or you can choose to set chapters manually.

Final Output

CyberLink PowerProducer offers several methods to finalize your production, which are useful under different circumstances. You can burn your production to disc as the last step in your movie production process, save your production as a disc image for later burning, or create a DVD folder to organize your media files on your hard drive.

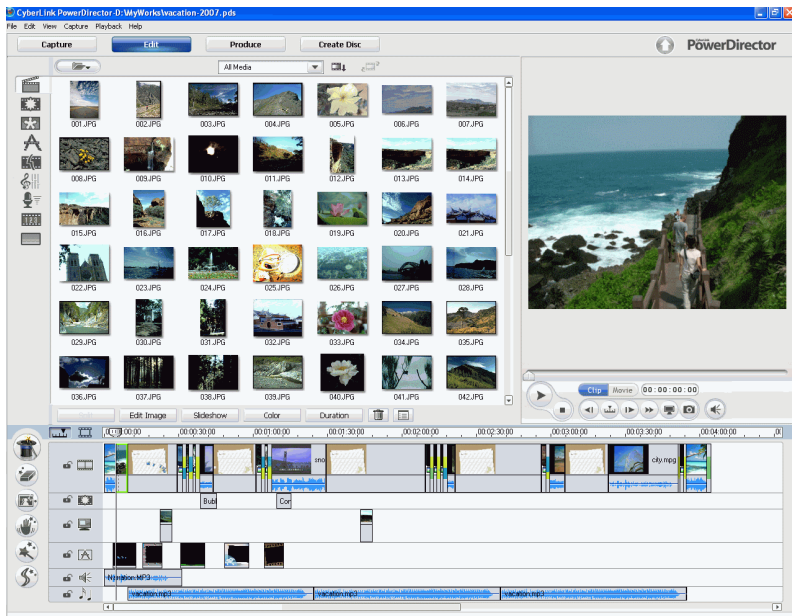


Depending on your burning drive and disc type, one or more of these options may be available simultaneously.

Edit Your Videos

You may want to edit your video or add some transitions or titles for a more professional looking video. CyberLink PowerDirector Express has a variety of tools to refine your video as required.

To begin editing your videos, select **Edit your videos** in the CyberLink PowerStarter window.



Note: For a more detailed description of this program and its functions, please consult the product's help file.

Editing Options Available

Editing is a broad term that encompasses a number of different functions, including:

- **Splitting a Clip:** You can split a media clip into two clips at the current position of the Timeline slider.
- **Performing a Trim:** Video clips captured from external capture devices often contain unwanted portions at the beginning, between scenes or at the end. These unwanted portions can easily be removed in CyberLink PowerDirector using the Trim function.
- **Take a Still Snapshot of a Video Clip:** You can capture a single frame from a video clip and automatically load the snapshot in the Library.
- **Change the Color of a Visual Media Clip:** You may wish to change the color attributes of a video or image clip or a color board in order to produce a surprising effect, or simply to emulate reality more closely.
- **Set a Video Clip's Interlacing Format:** All video clips have an interlacing (TV) format, which specifies how frames are displayed. Using video clips with conflicting (or incorrect) TV formats can result in degraded video quality in your final production.
- **Mix Audio Levels in the Audio Mixing Room:** Using the Audio Mixer in the Audio Mixing Room gives you very precise control over the volume levels of the audio clips in the work space.
- **Add a Fade Effect to an Audio Clip:** You can fade an audio clip in or out to give your video a professional sounding sound track.

Using Magic Tools

CyberLink PowerDirector's Magic Tools make working with audio, video and image clips easier than ever before. Magic Tools allow you to:



Magic Movie Wizard: If you are new to the editing process and not sure how or where to get started, then the Magic Movie Wizard can help. The Magic Movie Wizard can take all of your media and create a dazzling movie production in just a few steps.



Perform Magic Clean on an Image Clip: When applied to image clips, CyberLink PowerDirector's Magic Clean tool enhances the image for a sharper, brighter picture.



Perform Magic Clean on a Video Clip: When applied to video clips, CyberLink PowerDirector's Magic Clean tool automatically adjusts the video output for a sharper, brighter picture.



Perform Magic Clean on an Audio Clip: The Magic Clean tool uses CLNR (CyberLink Noise Reduction) technology to improve output audio.



Magic Cut: The Magic Cut tool is ideal for condensing long video segments into shorter clips - for example, cutting one hour of video down to ten minutes.



Magic Fix: CyberLink PowerDirector's Magic Fix tool fixes shaky videos, blurry photos and removes red eye from your pictures.



Magic Style: CyberLink PowerDirector's Magic Style tool transforms clips into a finished movie that is ready to be produced.

Adding Effects

CyberLink PowerDirector lets you add a variety of effects to your home movie.



Effects: You can add special effects to video or image clips in your movie.



PiP Objects: You can add graphics on the video or photo clip in the PiP Track.



Transition Effects: You can add transition effects to your movie, giving it that professional looking feel.



Title Effects: You can add creative titles to your movie by adding text and images.

Producing your Movie

After you have completed the editing process, your movie is ready for final production. In just a few simple steps, the Production Wizard compiles all the separate elements of your movie into a playable movie file, in a variety of formats, that can be played, shared with friends or burned to disc.

To produce your movie in CyberLink PowerDirector, click on

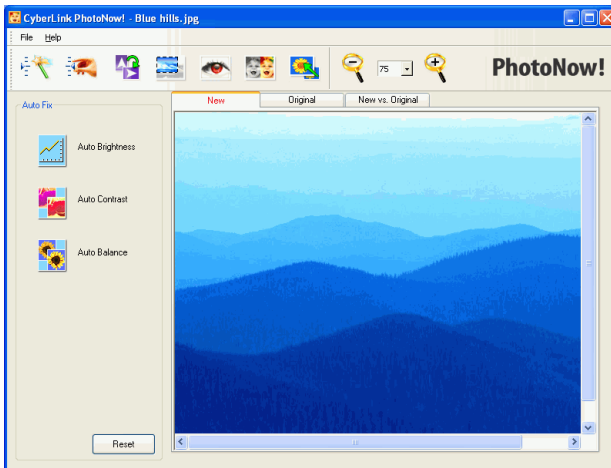
A rectangular button with rounded corners and a light gray background, containing the word "Produce" in a small, dark font.

and follow the easy to use Production Wizard steps.

Editing Your Photos

CyberLink PhotoNow! allows you to touch-up your photos by adjusting brightness and contrast, removing red eye and more.

To begin editing your photos, select **Edit your photos** in the CyberLink PowerStarter window.



Some of PhotoNow!'s features include:

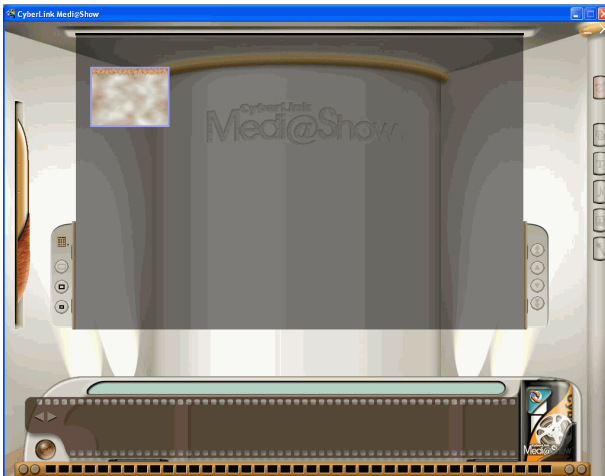
- automatic adjustment of levels, contrast and equalization
- manual adjustment of brightness, contrast, saturation and sharpness
- automatic and manual red eye removal
- crop, resize and rotate functions
- customized special effects

Note: For a more detailed description of this program and its functions, please consult the product's help file.

Creating a Slideshow

You can easily create a dazzling slideshow of your photos using CyberLink Medi@Show. Use the Film Wizard to import, set your background music and specify your playback settings in a few easy steps.

To begin creating a slideshow, select **Create a slideshow** in the CyberLink PowerStarter window.



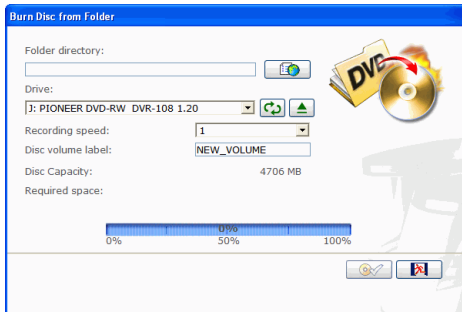
Note: For a more detailed description of this program and its functions, please consult the product's help file.





Burning a DVD Folder

If you have created a DVD folder you can burn this folder to a disc for storage.

To burn a disc from a DVD folder, do this:

1. Select **Burn a DVD folder** in the CyberLink PowerStarter window.



2. Click , then select the folder you want to burn from.
3. Insert your disc and select your drive.
 - Click  to refresh the display of your drive.
 - Click  to open your disc drive door.
4. Click  to start. CyberLink PowerProducer displays the real-time progress of the task.

Note: For additional help using this program, please see the help system it contains.

Chapter 6:

Copy & Backup

With CyberLink DVD Suite, you can easily make an exact copy of a data CD or DVD using CyberLink Power2Go and copy a non-CSS protected DVD Video disc with CyberLink PowerDVD Copy. You may also back up all your data and restore it when and if required using CyberLink PowerBackup.



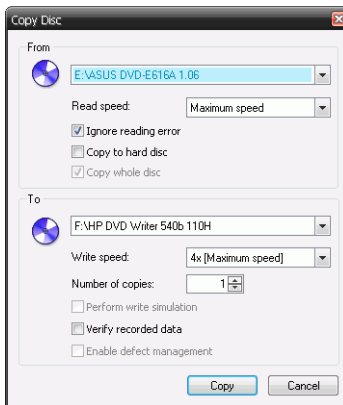
Copying Data Discs

The Copy Disc option allows you to make an exact copy of a disc of any format. However, you must copy the disc contents onto a blank disc of the same disc type. (You cannot, for example, copy content from a CD onto a DVD.)

Note: Some discs may not be copied if they are copy-protected or contain errors.

To copy a disc, do this

1. Select the data disc type (CD or DVD) you want to copy from the CyberLink PowerStarter program window.



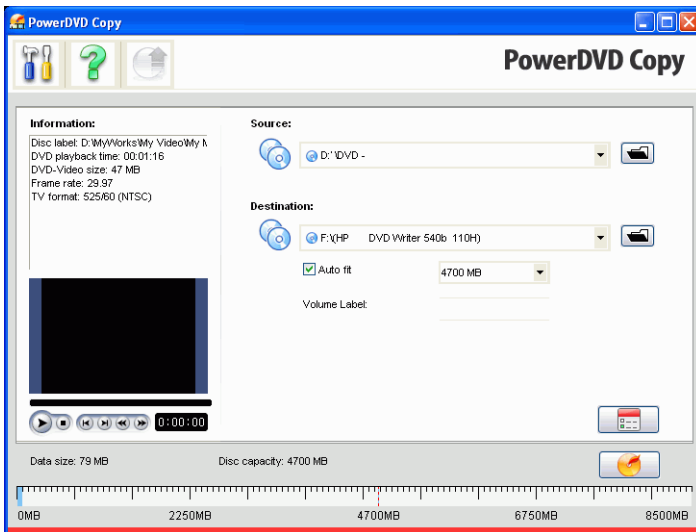
2. Select your source and target drives.
3. Click **Copy**. CyberLink Power2Go burns the copied data onto the disc.
4. When burning is complete, select an option in the dialog box that opens:
 - Click **View Log** to view the burning log. The log opens in your default TXT editor, where you can view and save it.
 - Click **OK** to close the dialog and then exit.



Copying a Movie DVD

CyberLink PowerDVD Copy is a specialized tool for copying DVD movies from disc or hard drive onto a back-up DVD. You can likewise create a DVD folder on your hard drive, or burn it to a DVD as a movie. Easy-to-select options and an uncomplicated interface simplify the DVD-copying process.

To copy a movie DVD, do this

1. Select **Copy a movie DVD** in the CyberLink PowerStarter program window.
2. In the CyberLink PowerDVD Copy window, select your video source of the movie DVD you would like to copy.



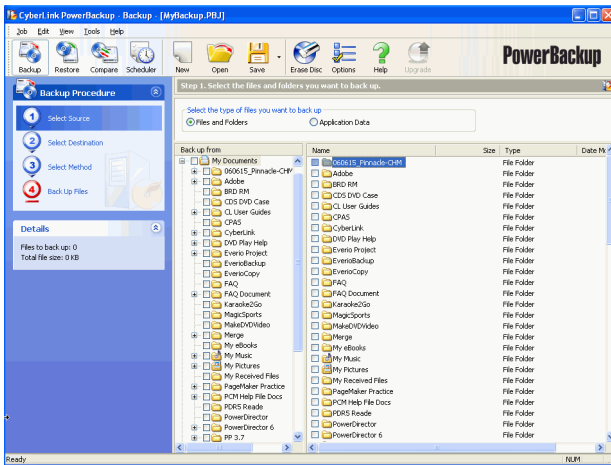
3. Select the destination where to copy the movie DVD.
4. Click the  button and select the specific content from the DVD you want to copy, if not all is required.
5. Click . CyberLink PowerDVD Copy burns the movie onto the disc.

Backing up and Restoring Data

Backing up data is an important security procedure that can save large amounts of time and money in case of disaster, disk failure, attack by a hacker or virus, etc. By keeping a backup copy of your important data on another medium, you can quickly and reliably restore your data to its original state.

Backing Up Data

To backup your data, first select **Backup your PC** from the CyberLink PowerStarter program window and follow these simple steps:



Step 1 - Select Source

In the Backup window select the source by locating and checking the files and folders that you want to back up in the two file directory panes. (These panes resemble Windows Explorer in functionality.) You

can choose to backup **Files and Folders** or **Application Data** by selecting the desired file type above the directory panes.

Step 2 - Select Destination

Click **Select Destination**, then set your backup destination.

- **Backup destination:** Select your backup destination from the drop-down box. Backup destinations may include hard disk or a disc burner (depending on your available hardware).
- **Backup filename:** Give each backup file a unique name. To save the backup file to a different directory, click **Browse**, then locate and select the folder you want to use.
- **Include Restore Tool:** Select to create an executable (.exe) file that allows you to restore your data on a computer that does not have the PowerBackup program installed.
- **Split into volumes:** Divide your backup files into volumes (portions) of the size you specify.

Step 3 - Select Method

Click **Select Method**, then choose the backup method (and advanced options, if desired) that you want to use.

- Backup methods include **Full**, **Differential** and **Incremental**.
- For more options, click **Options**.

Note: The specific functions of this program depend on the version you have purchased, and therefore some features may not be available.

Step 4 - Back Up Files

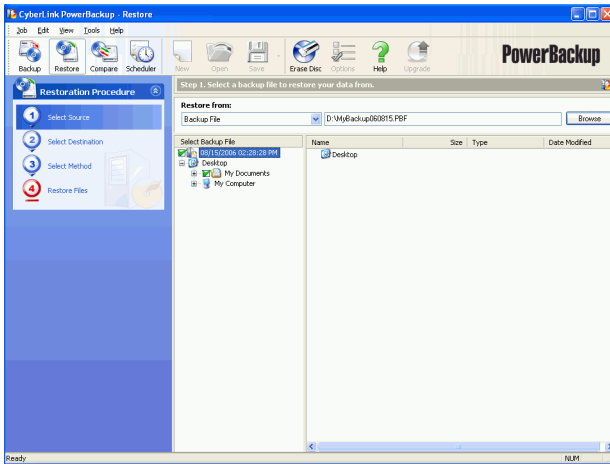
Click **Back Up Files**. Verify that the settings are correct, then click one of the buttons to begin your backup.

- Click **Backup Now** to begin backing up immediately.
- Click **Add to Scheduler** to schedule the backup for a later time.

Note: The specific functions of this program depend on the version you have purchased, and therefore some features may not be available.

Restoring Data

To restore your data after a backup, first select **Restore your PC** from the CyberLink PowerStarter program window and follow these simple steps:



Step 1 - Select Source

In the Restore window select the source by selecting the restoration source from the **Restore from** drop-down box.

- **Backup file:** Restore from an existing backup file. To open a backup file, click **Browse**, then locate and open the file you want to use.
- **My Catalog:** Restore from existing records of previous backup jobs. (To delete records from My Catalog, use the **Edit > Delete Catalog Record** or **Delete All Catalog Records** command.)
- **Disc drive:** Restore from a disc.

Once you select the source, select the files you want to restore.

Step 2 - Select Destination

Click **Select Destination**, then set your restoration destination.

- **Original location:** Restore to the original location from which the files were backed up.
- **Alternative location:** Restore to a new location. To set a new directory, click **Browse**, then locate and select the folder you want to use.
- **Single directory:** Restore all of the backed up files to a single new directory. To set a new directory, click **Browse**, then locate and select the folder you want to use.

Step 3 - Select Method

Click **Select Method**, then choose the restoration method you want to use.

- **Do not overwrite:** Restores only files that are not found on your hard drive, and does not overwrite existing files.
- **Overwrite older files:** Overwrites existing files on your hard drive if the backed-up copy is newer.
- **Always overwrite the files on my computer:** Overwrites existing files on your hard drive with the backed-up copy in every case.
- **Ask before overwriting:** Prompts you to decide which copy you want to keep.

Step 4 - Restore Files

Click **Restore Files** and then verify that the settings are correct. Click **Restore Now** to begin restoring files immediately.

Chapter 7:

Utilities

CyberLink DVD Suite provides you with a number of useful disc utilities, including allowing you to erase rewritable discs that previously contained recorded data. You can also design and print professional looking labels using CyberLink LabelPrint to complete the disc making process or create and burn a disc image.

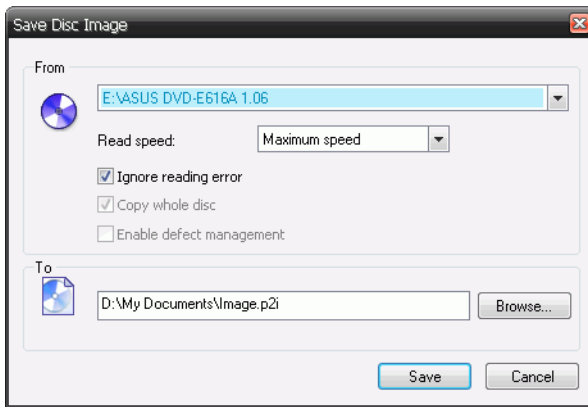


Creating a Disc Image

Creating and saving a disc image onto your hard drive is useful for backing up your discs on your computer for future burning tasks.

To save a disc image, do this:

1. Select **Create a disc image** in the CyberLink PowerStarter window.



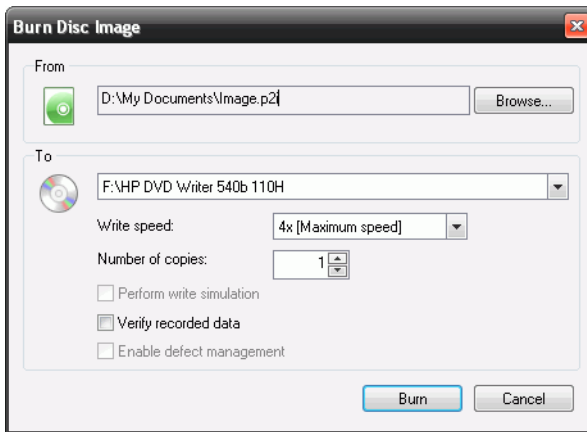
2. Insert your disc. If necessary, select your source drive in the **From** drop-down box.
3. Enter the destination folder and disc image file name in the **To** entry box, or click **Browse...**, select a folder and enter the disc image file name.
4. Click **Save** to save the disc image.

Burning a Disc Image

Burning a disc image to disc allows you to restore a saved disc image to disc as well as burn disc images created by the CyberLink Image Recorder.

To burn a disc image, do this:

1. Select **Burn a disc image** in the CyberLink PowerStarter window.



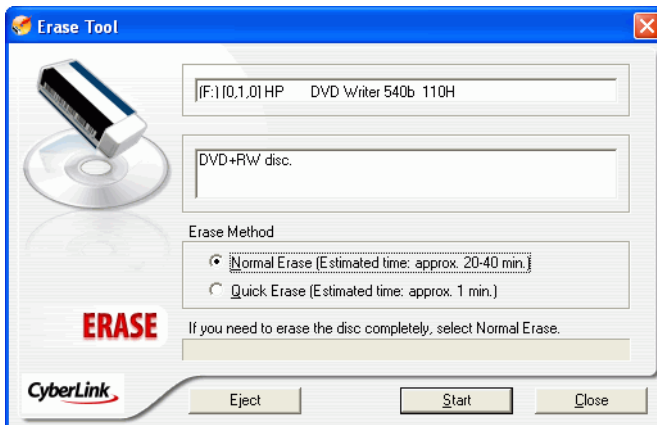
2. Click **Browse...** and locate the disc image.
3. Insert your disc and select your drive in the drop-down list.
4. Click **Burn** to start burning it to disc.

Erasing a Disc

If you are using a rewritable disc, you can erase content that has been previously recorded onto it. This allows you to reuse the same discs over and over without the need to continually buy new discs.

To erase a disc, do this:

1. Select **Erase a disc image** in the CyberLink PowerStarter window.
2. Insert your disc and select your burner in the Erase Tool window.



3. Select an erasing method:
 - The **Normal erase** option erases all of the content the disc contains.
 - The **Quick erase** option erases the disc index contained on the disc.
4. Click **Start** to start. When the task is completed, a screen message appears, informing you of the status.

Creating Labels

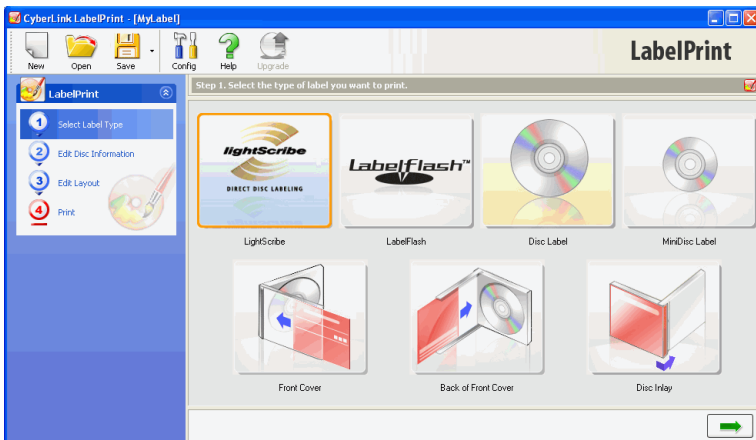
Cyberlink LabelPrint offers a wide variety of layout formats and supports a number of printing options, including printing directly on your disc using LightScribe and LabelFlash technologies.

Note: A LightScribe drive and discs are required to use the LightScribe feature.

Note: A LabelFlash drive and discs are required to use the LabelFlash feature.

Note: For a more detailed description of this application and its functions, please consult the product's help file.

To begin creating a label, select **Print a disk label** on the CyberLink PowerStarter window.



Step 1 - Select a Label Type

The first step in creating a label is to select the type of label you want to print. You can select to create LightScribe label, LabelFlash label, a disc label, a mini disc label, a front cover, back cover or a disc inlay.

Step 2 - Edit Disc Information

Add or edit disc information, such as a title, which will allow you to recognize the disc. Add or edit the content list information to keep track of which files you have added to the disc. You can add or edit this information on the Edit Disc Information page.

Step 3 - Edit Layout

By selecting a layout, modifying the fonts, and using a custom background image, you can create a more personalized disc label. You can:

- Select a Label Layout
- Add a Background Image
- Add or Modify Text

Step 4 - Print

You are now ready to print your label with CyberLink LabelPrint. You can print on one of the following media:

- **Plain paper:** Allows you to print on any sheet of paper your printer supports.
- **Label paper:** Provides labels for easy printing.
- **Directly onto your disc:** Does away with paper labels, but requires a special LightScribe burning drive and disc.

Chapter 8:

Technical Support

This chapter contains technical support information. It includes all the information to find the answers you need to assist you. You may also find answers quickly by contacting your local distributor/dealer.

This chapter contains the following sections:

- "Before Contacting Technical Support" on page 56
- "Web Support" on page 57
- "Telephone Support" on page 57
- "Email Support" on page 58

Before Contacting Technical Support

Please take advantage of one of CyberLink's free technical support options:

- consult the User Guide or the online help installed with your program.
- refer to the Frequently Asked Questions (FAQs) in the Support section of the CyberLink Web site.

http://www.cyberlink.com/multi/support/product_faq_home.jsp

The FAQs may have information and helpful hints that are more current than the User Guide and online help.

When contacting technical support by email or phone, please have the following information ready:

- registered **CD-key** (located on your CD case)
- the product name, version and build number, which generally can be found by clicking on the product name image on the user interface
- the version of Windows installed on your system
- hardware devices on your system (capture card, sound card, VGA card) and their specifications
- the wording of any warning messages that were displayed (You may want to write this down or take a screen capture)
- a detailed description of the problem and under what circumstances it occurred

Web Support

Solutions to your problems are available 24 hours a day at no cost on the CyberLink web sites:

Note: You must first register as a member before using CyberLink web support.

CyberLink provides a wide range of web support options, including FAQs and a user community forum, in the following languages:

Language	Web Support URL
English	http://support.gocyberlink.com
Traditional Chinese	http://tw.cyberlink.com/chinese/cs/support/index.jsp
Simplified Chinese	http://cn.cyberlink.com/chinese/cs/support/index.jsp
Japanese	http://jp.cyberlink.com/english/cs/support/new_site/support_index_jpn.jsp

Note: A community forum and some other limited web support features are also available in German.

Telephone Support

In order to provide the best solution to our end-users, **Voice Support** is part of the service we provide in the following languages:

Language	Voice Support URL
Chinese	http://tw.cyberlink.com/chinese/cs/support/voice_support.jsp

Language	Voice Support URL
English	http://www.cyberlink.com/english/cs/support/new_site/voice_support.jsp
French, German, Italian, Spanish	http://de.cyberlink.com/multi/program/page/_page_display.jsp?seqno=173
Japanese	http://jp.cyberlink.com/english/cs/support/new_site/support_index_jpn.jsp

Email Support

Email support is available in a variety of languages, including through the use of the technical inquiry form.

See the following list for contact information for specified languages.

Language	Web Support URL
Traditional Chinese	http://tw.cyberlink.com/english/cs/support/form/index.jsp
English	http://www.cyberlink.com/english/cs/support/form/index.jsp
French, German, Italian, Spanish	goCyberlink@aixtema.de

Index

A

- A/V Options pad 22
- acquiring content
 - from digital camera 29
 - from DV camcorder 29
 - from PC camera 29
 - from TV 29
 - from VCR 29
- add to Favorites 3
- Alternative location option 47
- Always overwrite the files on my computer option 47
- Ask before overwriting option 47
- Audio CD, playing 24
- Audio configuration 26
- audio streams
 - menu 23
 - switching of 23
- audio tracks, ripping to hard disk 14
- Auto-check for latest version 6
- Auto-Resume
 - settings of 25

B

- Backing Up Data 44
- bookmarking 24
- bootable
 - CD, burning 17

- floppy disc 17
- image file 17
- burning
 - bootable data disc 17
 - data discs 16
 - disc images 51
 - DVD Folder 39

C

- camcorder
 - capturing from 29
- Capture/Import Media 28
- capturing
 - from digital camera 29
 - from DV camcorder 29
 - from PC camera 29
 - from TV 29
 - from VCR 29
- capturing frames 23
- CD
 - ripping music from 14
- chapters
 - setting 31
- CLEV-2 25
- Configuration 24
 - PowerStarter 5
- Control Wheel 23
- Copy & Backup menu 4
- Copy Disc 42
- Copying a Movie DVD 43
- Create a movie disc 28
- Creating a Slideshow 38
- Creating Labels 53
- Customize Your Disc's Menu Page 29
- CyberLink Products window 7

D

- Data menu 4
- Delete All Catalog Records 46
- Delete Catalog Record 46
- digital camera, capturing from 29
- disc image
 - burning 51
 - saving 50
- disc utilities
 - Burn Disc Image 51
 - Erase Disc 52
 - Rip Audio 14
 - Save Disc Image 50
- Do not overwrite option 47
- drag & drop playback 24
- DV camcorder, capturing from 29
- DVD 28
- DVD player 21
- DVDs
 - playing 24

E

- Edit Your Videos 33
- editing
 - text on disc menus 30
- Editing Your Photos 37
- Effects 35
- Erase Disc
 - procedure 52

F

- Favorites menu 3

- file directory panes 44
- first play 31
- floppy disc, bootable 17
- full screen 23, 25

I

- Import
 - photos 29
 - video files 29
- InstantBurn
 - erasing a disc 52
 - supported discs 20
 - using InstantBurn 20

J

- jumping 23

L

- LabelPrint 53
- LightScribe 54

M

- Magic Movie Wizard 34
- Magic Tools 34
- Medi@Show
 - creating a slideshow 38
- media available for printing on 54
- Media library server 16
- Media library service 12

Media tab 12
 menus
 editing text 30
 first play 31
 modifying disc menu
 editing text 30
 Movie Player menu 4
 music
 ripping to hard drive 14
 Music menu 4
 My Catalog 46

N

normal erase 52

O

opening
 DVD files on hard disk drive 24
 Original location option 47
 Overwrite older files option 47

P

paper templates 54
 PC camera
 capturing from 29
 PhotoNow!
 editing your photos 37
 plain paper 54
 playing
 Audio CDs 24
 DVD files from hard disk drive 24

DVDs 24
 files 24
 using drag & drop 24
 VCDs/SVCDs 24

Power2Go
 burn a music disc 12
 burn data disc 16
 burning a disc image 51
 copying discs 42
 create a music disc 12
 creating a disc image 50
 rip an audio CD 14

Power2Go mode
 burning bootable data discs 17

PowerBackup
 backing up data 44
 restoring data 46

PowerDirector
 adding effects 35
 editing videos 33
 using magic tools 34

PowerDVD 21
 Configuration
 Audio 26
 Information 26
 Player 25
 Skin 25
 Video 25
 main controls 23
 navigating during playback 23
 playback controls 22

PowerDVD Copy
 copying a movie disc 43

PowerProducer
 burning a DVD folder 39
 capture/import media 28
 create a movie disc 28
 customize your disc's menu page

29

final output 32

PowerStarter Program 2

print

available media 54

print a disc label 53

Q

quick access buttons 5

quick erase 52

R

Receive CyberLink product information 6

Recent Data tab 16

Recently created documents 16

Recently opened documents 16

remove from Favorites 3

Restore Tool 45

Restoring Data 46

Return to PowerStarter 6

Rip Audio

procedure 14

S

scheduling a backup for later 45

Search

album 12

artist 12

genre 12

recently added 12

year 12

selecting speaker environment 26

setting chapters 31

shuttling 23

Single directory option 47

speaker environment selection 26

Split into volumes 45

step frame 23

subtitles

displaying 23

Read-It-Clearly 26

SVCD 28

SVCD, playing 24

System Requirements 9

T

time search 23

TV

capturing from 29

U

Upgrade

PowerStarter 6

Utilities menu 5

V

VCD 28

VCD, playing 24

VCR

capturing from 29

Version Table 8

Video & Photo menu 4

View Log 13, 17, 18

W

Watch a DVD movie 22

webcam

 capturing from 29

